







Location

Centenary Square forms the main public piazza in the Heart of the City Centre located in the shadow of Bradford's famous City Hall. The square sits in a natural bowl below the University, leisure and retail quarters, close to the Alhambra Theatre and the new National Media Museum.

Key

-  - 10.56 miles from Airport (aprox)
-  - 0.01 miles from Train Station
-  - 12.43 miles from Leeds
-  - 4 miles from M62
-  - 13 miles from M1
-  - 2 multi-storey Car Park within 400 yards





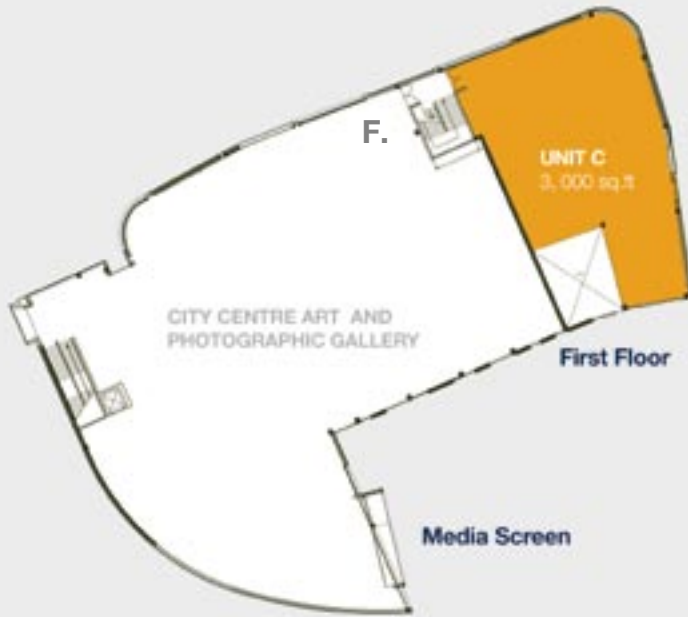
The Building

The sweeping contemporary building is the creation of developers Asda St James and architects Panter Hudspith renowned for the introduction of new architecture into historic settings. The design answers the challenge to respect Bradford City Hall and to introduce glimpses of interesting adjoining buildings whilst producing internal spaces appropriate for today's leisure and food offers.

The 100 metres of colonnade frontage is shared by 6 units, 3 of which offer double height volume. A large upper level destination space has been created which is to be the home of a major Gallery, shared between Bradford Council and Impressions an established and enlightened Photographic Gallery who are relocating from York to Bradford.

On opening, the new Gallery will take advantage of the multi-purpose media screen jointly sponsored by the BBC, Bradford MDC and Asda St James to provide an information source and public realm screening of national events.

Units and Offers



Unit	Offer	Ground		First	
		sq.ft	sq.m	sq.ft	sq.m
A	Tulsi	6,000	557	-	-
B	Markaz	3,700	344	-	-
C	Available	3,000	279	3,000	279
C1	Starbucks	1,600	149	-	-
D	Lloyds No 1	6,700	622	6,000	557
E	Chino Thai	5,600	520	5,500	511
F	Gallery	775	72	12,370	1,149
Media Screen	Bradford MDC	-	-	-	-
Cash Point	HSBC	-	-	-	-



Last Available Unit

UNIT C



Ground Floor



First Floor

Unit Space

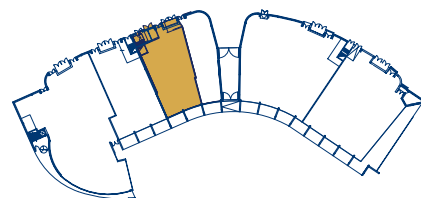
Ground
First

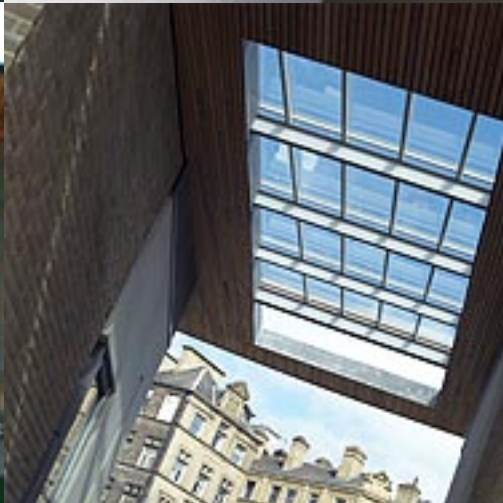
Square Feet

3,000
3,000

Square Metres

279
279







The Future: The Centenary Square bowl is the centrepiece of the Bradford masterplan which envisages the replacement of the Police headquarters and Magistrates Courts with a major water feature to support additional leisure initiatives including the former Odeon cinema

www.centenarysquare.com

Misdescriptions/Misrepresentations

Pudney Shuttleworth and Hill Woolhouse for themselves and for the vendor(s) of this property whose agents they are, give notice: i) These particulars do not constitute, nor constitute any part of, any offer or contract: ii) None of the statements contained in these particulars as to the properties are to be relied on as statements or representations of fact; iii) Any intending purchaser must satisfy himself / herself by inspection or otherwise as to the correctness of each of the statements contained in these particulars.

Property Misdescriptions Act 1991. These details are believed to be correct at the time of compilation but may be subject to subsequent amendment

